



P.O. Box 405 • 939 West Quincy St.  
Lakeland, FL 33802/33815  
Phone: 800-659-1797  
Fax: 863-683-9749  
www.linchutes.com

## Valiant Products, Inc.

Trash/Linen Chutes • Tenant Storage Lockers • Recycle Systems

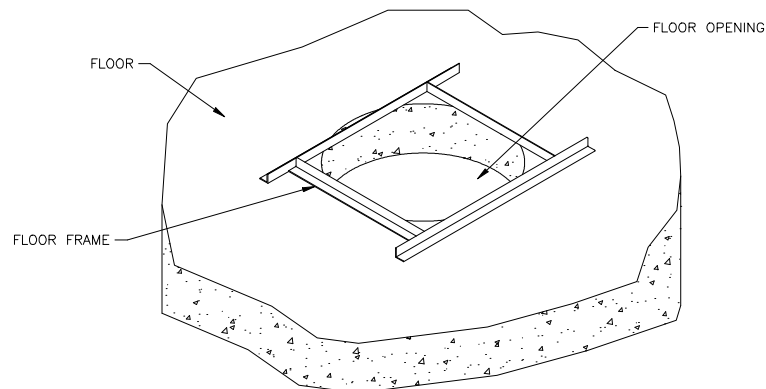
Installation of a Valiant chute requires very few tools; hammer, screwdriver, drill, wrench and level.

Materials are prefabricated to dimensions shown on shop drawings, therefore, no field cutting or fitting is required. The joints are “slip joints” to permit slight field height variations.

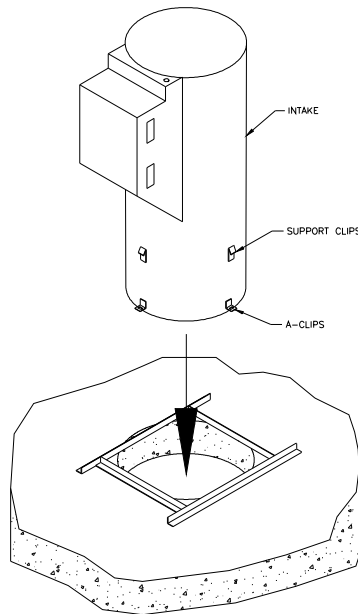
Intake doors, frames and hardware are prefabricated and installed on each intake section throat, fully assembled. Doors and pneumatic closure tension are adjusted. The protective covering on the doors should be removed only after completion of plastering and painting.

### Install Instructions

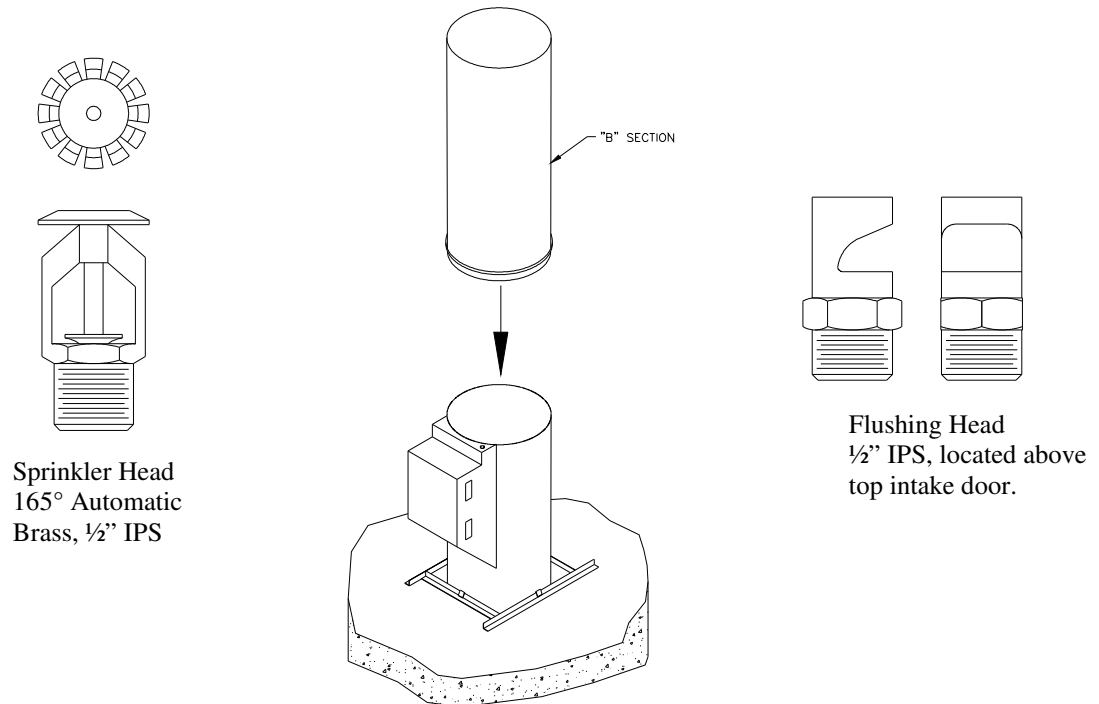
1. Distribute chute sections, typically one intake and one “b” section per floor, noting that the top intake section will have a flushing head and a sprinkler head.
2. On the first floor above the discharge room, place a floor support angle over floor opening with cross members parallel to the intake door.



- Set the first intake section, this section has 4 a-clips with slots welded to the bottom of it, into the floor opening and seat the support clips over the floor support.



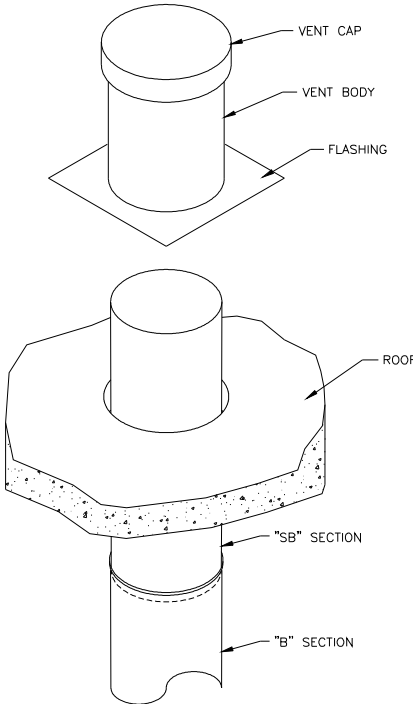
- After first intake section has been set, slip the beaded end of the plain chute section ("b" section) into the intake section making sure it is sealed all around. Some floor heights may require multiple "b" sections. Check with level to plumb chute as installation proceeds.



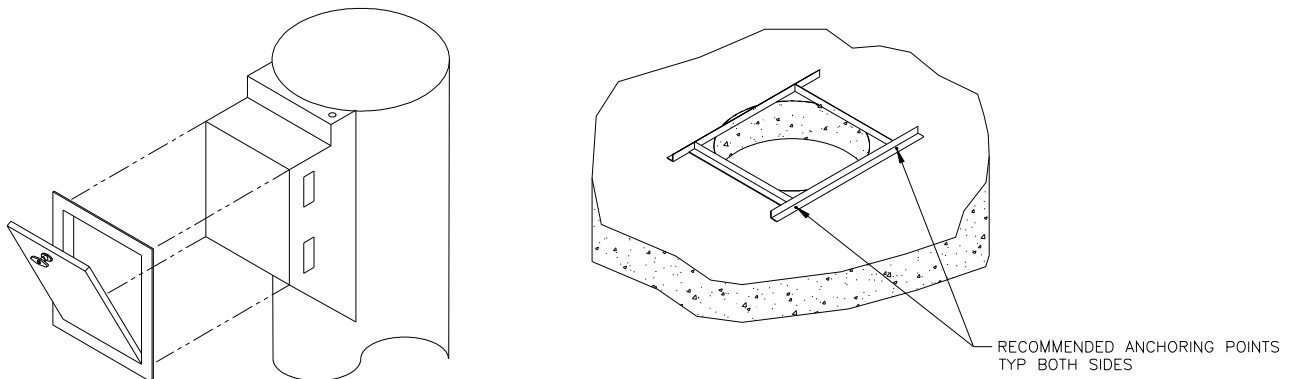
Sprinkler Head  
165° Automatic  
Brass, 1/2" IPS

Flushing Head  
1/2" IPS, located above  
top intake door.

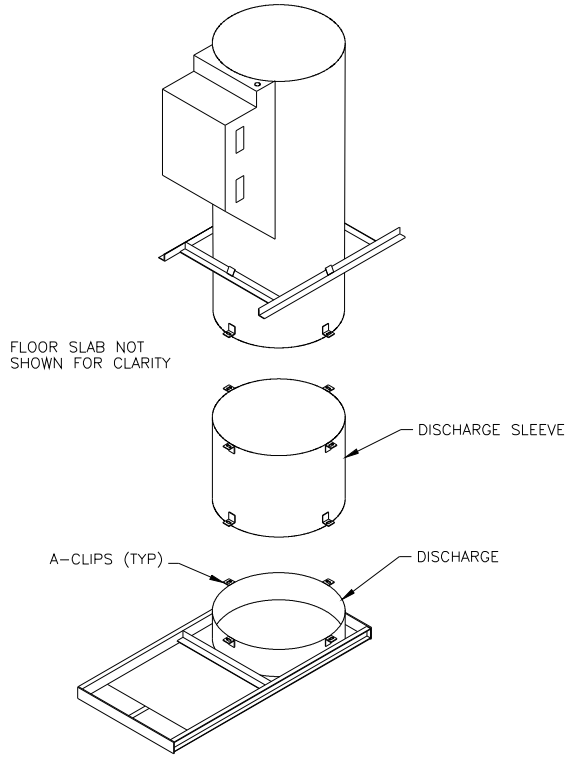
5. Repeat steps #2, #3 and #4 on the remaining floors. Note the floors requiring intakes with sprinkler heads. Per NFPA, this means the top floor and at alternate floor levels with a mandatory one at the first intake floor.
  
6. After installation of the top intake section and final “b” sections, the final beaded section or “sb” section of chute is installed to protrude above the roof.



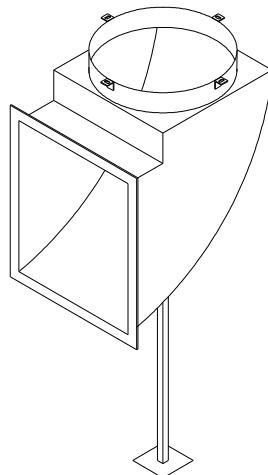
7. Place vent assembly over the “sb” section protruding through the roof, until the vent is seated onto the roof. Secure the vent body to the “sb” section using  $\frac{3}{4}$ ” long tek-screws. Attach flashing to the roof, the roofer may then finish over the flashing assembly.
  
8. After all floors of chute have been installed, starting at the first intake floor, plumb and level intake doors. Make sure that the face of the doors will be flush to the proposed wall. Fasten the floor support frames to the floor slab. The frames are to be anchored per local building codes.



9. Complete installation in the discharge room. Slip the discharge sleeve, this sleeve has 4 angle clips on each end, over the section of chute projecting through the first floor slab. Match the clips and secure with (4) 2 1/2" long bolts and nuts. Secure the discharge in the same manner to the sleeve. If the discharge is a horizontal rolling type, slide the door back and connect the fusible link to the angle clip on the bottom of the door. If the discharge is hopper style, attach the top hinged door to the throat of the hopper. Attach the door support arm to the flange of the door using the bolts and nuts supplied. Open the door and connect the fusible link to the eye ring located on the door.



OR



## Standard Floor Elevation

